

Essex County Environmental Center ~ Public Programs

FALL 2022



The Essex County Environmental Center is located at 621-B Eagle Rock Avenue in Roseland in Essex County West Essex Park and is a facility of the Essex County Parks System. Hours of operation are Monday through Friday from 9:00am to 5:00pm and Saturday from 10:00am to 2:00pm. Essex County West Essex Park is open to the public every day from dawn until dusk. Pre-registration is required for all programs unless otherwise noted. **All programs require a minimum number of participants to run.** For more information, please call 973.228.8776.

The Essex County Environmental Center continues to offer a variety of seasonal environmental education programming for groups and families. While mask wearing and social distancing requirements have been lifted, we remain cautious and ask our patrons to please be responsible, keeping the health and safety of everyone in mind.

Thank you for your continued support, cooperation, and participation!

FIELD TRIP OFFERINGS FOR ORGANIZED GROUPS (Schools, Scouts, Church/Community Organizations, Home Schools, Etc.)

VIRTUAL FIELD TRIPS

\$75 per program, 45 minutes

Choose from the Following Virtual Field Trip Topics



Seasonal Discovery Nature Tour / Frog Pond Science
Backyard Birding / Lenape Learning Area Tour &
Lenape Skills / Camping 101 / Fish & Fishing 101 / Passaic
River Studies / Mighty Migrations / Butterflies / Wild about
Wildlife / Recycling (*grant funded and free for Essex
County institutions while funds last*) / Green Building Tour
Honeybees & Native Pollinators ...and more!

IN-PERSON (OUTDOOR ONLY) FIELD TRIPS

Organized Group Bookings

(Institutions, Scouts, Municipal Recreation Programs, Homeschoolers, Etc.)

All ages. Maximum of 20 participants including group leaders/chaperones. Program length is 1.5 hours. Choose from a variety of topics offered by the Essex County Environmental Center. Inquire by calling the Center at 973.228.8776. Minimum of 10 person booking requirement (if less booked, minimum booking fee applied). **Fee: \$8 per participant (including leaders/chaperones)**

Small Groups/Pods and Families

All ages. Fall topic selections include: Autumn Seasonal Adventure, What's in That Hole?, Lenape Village Tours, Camping 101, Backyard Birding, Geodesic Dome Gardening, Frog Pond Science, Wildflower Walk, Nature Journaling, Wetland Biodiversity and MORE! All programs are held completely outside. One group at a time with a limit of 6 people. Schedule your 45-minute time slot by calling the center at 973.228.8776.
Fee: \$10 child, \$12 adult or \$30 per family (2 adults, 2 children).

CLUBS FOR CHILDREN



YOUTH GARDEN CLUB

Tuesdays, September 6 & 20

4pm to 5pm

For ages 5 and up. Together we'll grow food in our garden plot and learn about everything from soil to seeds along the way. Participants will get hands-on experience with planting, harvesting and cooking. Session themes include soil and composting, seed planting and labeling, thinning, weeding and watering, selective harvest, garden pests, healthy eating and more! This is a drop-off and pick-up class (children only). Advanced registration required; call 973.228.8776. **Fee: \$10/child/session**

FROG POND CLUB

Wednesdays—September 21, October 5, November 2

4pm to 5pm

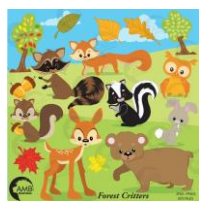
For children ages 5 through 9. Uncover and discover ecosystem interactions at the frog pond. Explore with nets, magnifiers, and microscopes to investigate what lives at the pond and learn from a naturalist what can be done to protect and conserve the pond inhabitants. Advance registration, payment and minimum number of participants are required; call 973.228.8776. **Fee: \$10 per child per session**



FOREST FRIENDS CLUB

Thursdays—September 15, October 20, November 17, December 15

4pm to 5pm



For children ages 5 through 10. We'll explore the forest using nets, binoculars, magnifiers, and microscopes to investigate nature in our wooded wetland habitat. Together we hope to foster an ethic of stewardship and offer an opportunity to take part in hands-on conservation projects. Advance registration, payment and minimum number of participants are required; call 973.228.8776. **Fee: \$10 per child per session**

ESSEX COUNTY 4-H



Essex County 4-H invites Essex County youth to participate in programming for all ages. For more information, visit <http://essex.njaes.rutgers.edu/4h>.

ESSEX COUNTY GARDENERS SHOWCASE

Rutgers Extension of Essex County 4-H program invites all Essex County youth and adults to participate in the upcoming county Gardeners' Contest! Entries will be accepted at Garibaldi Hall at the Essex County Environment Center, 621 Eagle Rock Avenue, Roseland, on Friday, September 23rd and showcased on Saturday, September 24th. Items will be judged and awarded the afternoon of September 24th at the 17th Annual Fall Family Festival. This year, there is a special salsa contest! Cash Prizes! <https://essex.njaes.rutgers.edu/4h/youth/fairs/>

4-H YOUNG GARDENERS CLUB

Saturdays—September 17; October 1, 15, 22

10am to 11am

For children in grades K to 12. Have you ever wondered how vegetables and flowers grow? From where spaghetti sauce comes? How to find a rainbow in a garden? The 4-H Young Gardener's Club can provide find the answers to these questions and more. Learning and fun happen all the time here. Meet in Garibaldi Hall. Advanced registration required; please call 973.353.1337.

MONTHLY PROGRAMS FOR ADULTS

NEW JERSEY WOODTURNERS

Mondays—September 26, October 24, November 28

7pm to 9:30pm

For adults and children ages 3 and up. Learn to turn with the NJ Woodturners Association. Discover the wonders of creating art from found pieces of wood. Topics vary by the month. For details, email Bob Amarant at Bobamarant@gmail.com. Meet in Garibaldi Hall. **Fee: \$10 per child, \$12 per adult, free for NJWA members**



ESSEX COUNTY BEEKEEPERS SOCIETY

Tuesdays—September 13, October 11, November 8

7pm to 9 pm

For adults and children ages 12 and up. The ECBS, a chapter of the NJ Beekeepers Association, is dedicated to teaching new beekeepers how to manage their bees and helping experienced beekeepers to do it better. If you think you might be interested in keeping honeybees and would like to explore what's involved, you're welcome to join us! Meet in Garibaldi Hall. Call Michael Frey at 973.239.3434 for topics and details. Monthly meeting location may change from time to time. **Fee: \$10 per child, \$12 per adult, free for ECBS and NJBA members**



SEPTEMBER 2022 PROGRAMS



ESSEX COUNTY PARKS PHOTOGRAPHY CONTEST

Submissions are due by Wednesday, September 7

Grab a camera and visit an Essex County Park! Anyone with a camera is invited and encouraged to submit photos that capture a part of your visit to the County Parks System. For rules and regulations, please contact the Essex County Environmental Center at 973.228.8776.

EVENING CANOE PADDLE ON THE PASSAIC

Wednesday, September 7

5:30pm to 7:30pm



For adults and children ages 10 and older. Take a leisurely paddle on the Passaic River! Paddlers will enjoy scenery and peacefulness as they paddle up the river and float downstream. Geared for beginners and children 10 and up accompanied by a parent or guardian. Meet in the Garibaldi Hall parking lot. Advanced registration and minimum number of participants are required; call 973.228.8776. **Fee: \$20 per person**

WALTER KIDDIE DINOSAUR PARK FIELD TRIP

Thursday, September 8

5:15pm to 7:15pm

For adults and children ages 7 and up. Meet at the end of Locust Avenue in Roseland and hike 1.5 miles total to explore this National Historic Landmark that is home to three-toed Grallator dinosaur tracks from the late Triassic age. Using clay, we'll make and take an impression of an existing track and leave the site undisturbed for future paleontological study. Advanced registration and minimum number of participants are required; call 973.228.8776. **Fee: \$12 per child, \$15 per adult**



SEPTEMBER 2022 PROGRAMS

PLASTER WILDLIFE TRACKING

Saturday, September 10th

10am to 11:30am

For families with young children ages 6 and up. Predict what tracks you might find in our wooded wetland habitat and go search the forest and river edge. We'll discover hoofed, clawed and webbed animal feet and see how wildlife is especially adapted to the terrain. All participants make and take a plaster animal track. Advanced registration and minimum number of participants are required; call 973.228.8776. **Fee: \$30 per family (up to two adults and two children) or \$10 per child, \$12 per adult**



SMORES n' MORE NIGHT HIKE

Wednesday, September 14

6pm to 7:30pm

For families. Come out to build a campfire and practice fundamental fire skills in a safe and controlled environment. Once we get our fire burning, we'll roast marshmallows and make s'mores. All ages are welcome. Advance registration and minimum number of participants are required; call 973.228.8776. **Fee: \$30 per family (up to two adults and two children) or \$10 per child; \$12 per adult**



BIKE RIGHT – LEARN TO RIDE

Saturday, September 17

10:30am to 12pm



For children ages 5 and older. Make learning to ride a bike easier for your child with TransOptions' Bike Right Learn to Ride class. Bike Right Learn to Ride will teach children the safe, easy and effective way to learn to ride. Using this "balance first" method, parents help get their children rolling while the child does most of the work. Participants learn the basics of balancing, starting, stopping, and steering a bike, as well as proper helmet fit and adjustment. Please bring a helmet and a bike (without training wheels) in good working order. In the event of rain, this program will not be rescheduled. Meet in Garibaldi Hall. Advanced registration and minimum number of participants are required; call 973.228.8776. **Fee: \$10 per child**

FROG POND ADVENTURE OUTDOOR CLASS

Thursday, September 22

5:30pm to 7pm



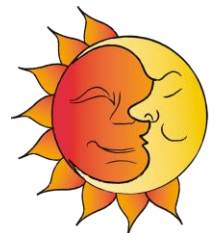
For families. This rrrribbetting program will take an up-close look at our pond ecosystem. Search out and identify the life found in the pond through magnifying glasses, microscopes, and field guides. Advanced registration and minimum number of participants are required; call 973.228.8776. **Fee: \$30 per family (up to two adults and two children) or \$10 per child, \$12 per adult**

17TH ANNUAL FALL FAMILY FESTIVAL

Saturday, September 24

11am to 3pm

For all ages. Come celebrate the Autumnal Equinox at the Environmental Center! There will be fun-filled activities for the entire family to enjoy—hands-on nature games and crafts, naturalist-led walks, live butterflies, canoeing, Native American life, a pumpkin patch, petting zoo, food, and more. **FREE EVENT; some items may be for sale.**



SEPTEMBER 2022 PROGRAMS

DINOSAUR DISCOVERY FAMILY FIELD TRIP

Thursday, September 29

4:45pm to 6:45pm



For families with young children ages 4 and up. Meet at the end of Locust Avenue in Roseland and hike 1-mile total to explore this National Historic Landmark that is home to three-toed Grallator dinosaur tracks from the late Triassic age. Using clay, we'll make and take an impression of an existing track and leave the site undisturbed for future paleontological study. Advanced registration and minimum number of participants are required; call 973.228.8776. **Fee: \$12 per child, \$15 per adult**

OCTOBER 2022 PROGRAMS



ESSEX COUNTY SOUTH MOUNTAIN RESERVATION ANNUAL FAMILY CAMPOUT

Starting Saturday, October 1 at 12PM to Sunday, October 2 at 11Am

Activities are designed for children ages 4 through 12. Families with young children seeking a nature-intensive outdoor experience are invited to register for the 8th annual SMR Family Campout scheduled for Saturday, October 1st through Sunday, October 2nd (rain dates, October 8-9). The program will be based out of Summit Field in Essex County South Mountain Reservation. Co-sponsored by the South Mountain Conservancy & Essex County Department of Parks, Recreation, and Cultural Affairs, with programming from the Essex County Environmental Center. The event will feature nature games, animal exhibits from Essex County Turtle Back Zoo, guided hikes, kids' exploration and crafts, live music, a campfire with stories, morning yoga and a Sunday breakfast. For questions regarding equipment and pricing options please email familycampout@somocon.org. Advanced registration is required. More details and registration information will be available in the beginning of September. You can stay up-to-date by signing up for the South Mountain Conservancy eBulletin at www.somocon.org. **Fee: \$50 per family (up to 5 family members).**

TODDLER SENSORY HIKE

Saturday, October 15

9am to 10am



For children ages 1-5 with caregiver supervision. Bring your toddlers for a sensory exploration outside with a naturalist. Visit the forest trails, frog pond, Passaic River and more. Advanced registration and minimum number of participants are required; call 973.228.8776. **Fee: \$30 per family (up to two adults and two children) or \$10 per child, \$12 per adult**

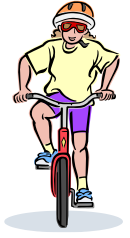
OCTOBER 2022 PROGRAMS

BIKE RIGHT – LEARN TO RIDE

Thursday, October 13

4pm to 6pm

For children ages 5 and older. Make learning to ride a bike easier for your child with TransOptions' Bike Right Learn to Ride class. Bike Right Learn to Ride will teach children the safe, easy and effective way to learn to ride. Using this "balance first" method, parents help get their children rolling while the child does most of the work. Participants learn the basics of balancing, starting, stopping, and steering a bike, as well as proper helmet fit and adjustment. Please bring a helmet and a bike (without training wheels) in good working order. In the event of rain, this program will not be rescheduled. Meet in Garibaldi Hall. Advanced registration and minimum number of participants are required; call 973.228.8776. **Fee: \$10 per child**



BATS OF NEW JERSEY

Tuesday, October 18

5:30pm to 7pm



For students in grades 1 through 5. Ever wonder what kind of local bats are catching bugs in your backyard? Or where they sleep? Learn from a bat enthusiast about our upside-down friends, play the role of a bat biologist in a simulated study and take-home plans to build a bat house! Advanced registration and payment are required; call 973.228.8776. **Fee: \$10 per child**

PASSAIC RIVER CANOE TRIP

Saturday, October 22

9am to 1pm

For adults and children ages 12 and up. Paddle up the Passaic River from the Environmental Center to Okner Park in Livingston! Pack your own snack to enjoy at the park and then float back down to Garibaldi Hall where we launched. The session includes basic paddling safety and techniques and all equipment. For intermediate and advanced paddlers. Children ages 12 and up may paddle with a parent guardian. Advanced registration and minimum number of participants are required; call 973.228.8776. **Fee: \$30 per person**



SMORES n' MORE NIGHT HIKE

Wednesday, October 26

6pm to 7:30pm



For families. Come out to build a campfire and practice fundamental fire skills in a safe and controlled environment. Once we get our fire burning, we'll roast marshmallows and make S'mores. All ages welcome. Advance registration and minimum number of participants are required; call 973.228.8776. **Fee: \$30 per family (up to two adults and two children) or \$10 per child; \$12 per adult**

COMMUNITY COMPOST BIN AND RAIN BARREL SALE

Pick-up on Saturday, October 29

10am to 2pm

Backyard Composting is an excellent way to reduce trash going to landfills and allows you to make your own compost! Rain Barrels reduce water costs, keeps our water clean and provides a natural source of water for plants and gardens all while reducing the number of pollutants that enter our storm drains. Orders must be placed by October 28th. Pick-up at Garibaldi Hall. For more information and for purchasing options, please visit <https://essex.compostersale.com/>.



NOVEMBER 2022 PROGRAMS

SMORES n' MORE NIGHT HIKE

Wednesday, November 2

6pm to 7:30pm



For families. Come out to build a campfire and practice fundamental fire skills in a safe and controlled environment. Once we get our fire burning, we'll roast marshmallows and make s'mores. All ages are welcome. Advance registration and minimum number of participants are required; call 973.228.8776. **Fee: \$30 per family (up to two adults and two children) or \$10 per child; \$12 per adult**

FOREST FRIENDS CAMP

Thursday, November 10

9:30am to 3:30pm

For students in grades K through 3. Learn about New Jersey's forest friends by way of exploration, games and craft activities with a naturalist educator as your guide. Come dressed for the weather. Advance registration and minimum number of participants are required; call 973.228.8776. **Fee: \$75 per camper**



HOLIDAY WREATH MAKING

Saturday, November 12

11am to 12pm

For adults. Welcome your friends and family for the holidays with a beautiful holiday wreath! Together we'll use evergreen boughs and other materials to create a seasonal work of art! All materials are included for this hands-on workshop. **Fee: \$25 per person**

HOT CHOCOLATE HIKE

Thursday, November 17

6pm to 7:30pm

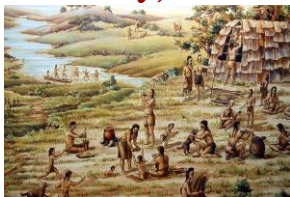
For families. Join us for a hike around the Environmental Center forest, build a winter campfire, sip hot cocoa and make s'mores. Dress warmly. Advance registration and minimum number of participants required; call 973.228.8776. **Fee: \$30 per family (up to two adults and two children) or \$10 per child; \$12 per adult**



LENAPE LIFE

Saturday, November 19

10:30am to 12noon



For families. Visit our Lenape Learning Area to better understand how they hunted, fished, foraged, and farmed using sticks, stones and bones. Make a clay pot and explore topics such as fire-friction, plant identification, games, clothing, and more. **Fee: \$30 per family (up to two adults and two children) or \$10 per child, \$12 per adult**

OWL PELLET DISSECTION

Monday, November 28

6pm to 7:30pm

For children ages 7-13. Learn about our beautiful and mysterious silent hunters of the night. Discover what they are eating as we discuss predators, prey and food chain dynamics. Carefully reconstruct the bones found inside owl pellets! Advance registration and minimum number of participants are required; call 973.228.8776. **Fee: \$10 per child**



LOOKING AHEAD



Forest Friends Feeder Contest **Registration Deadline: Friday, December 9th** **Project Drop-off: Friday, December 16th by 5pm**

For all ages. Create an edible, festive and unique wetland wildlife feeder for our outdoor exhibit. Will be on display in on our forested trail for as long as the forest critters allow!

For contest rules and to register, please contact, 973-228-8776.

OTHER OFFERINGS

EXTRA! EXTRA!



Calling all Nature Enthusiasts....

Grades Pre-K through 7. Youth Eco-Activity Boxes Available for Purchase! Looking for enrichment ideas? The Environmental Center educational staff has custom made boxes designed to excite and engage youth in nature exploration and active learning. The boxes are intended to keep children in pre-K through seventh grades excited and engaged in environmental science related outdoor activities. Box themes include Autumn Discovery, Butterfly Safari, Buzz Box (Bees), Flying Friends (Birds), Hop, Walk & Slither, Junior Naturalist, Wilderness Skills and more! **Fee: \$40/Box**

The boxes include crafts, projects, activities, and outdoor fun opportunities!
Boxes available for pick-up only at the Essex County Environmental Center.

Limited Availability!

For more information, please call 973.228.8776.

ANNOUNCEMENTS

ESSEX COUNTY ENVIRONMENTAL COMMISSION—Meetings are held virtually the first Monday of each month at 6pm. Some dates may change. For an up to date listing of meeting dates or for more information, please contact Essex County Environmental Affairs Coordinator Tara M. Casella at 973.228.8776 or visit <https://www.essexcountyparks.org/facilities/environmental-center/partners>.

GARDENING—Do you have garden-related questions? Contact Rutgers Cooperative Extension of Essex County and a Master Gardener will gladly assist you on their FREE helpline service. Helpline hours are Monday through Friday from 10am to 2pm. Call 973.228.2210 or e-mail mastergardenerec@gmail.com.

ESSEX COUNTY ENVIRONMENTAL CENTER PARTNER AGENCIES

New Jersey Audubon Society (NJAS) – 908.396.7409

Essex County Beekeepers Society (ECBS) – John DeBenedett, johndebenedett@yahoo.com

West Essex Park Conservancy (WEPC) – Ron Pate, 973.669.8030

Rutgers Master Gardeners of Essex County (MGEC) – Amy Rowe, 973.228.3179

New Jersey Woodturners (NJW) – Bob Amarant, 908.442.4729

Essex County 4-H Youth Development Program (4-H) – Marissa Blodnik, 973.353.1337

Essex County Environmental Commission – Tara M Casella, 973-228-8776

ATTENTION:

If you are not already on our e-mail list and you would like to receive an electronic file of our brochure as well as other e-notices and alerts, please call the Center at 973.228.8776 or e-mail tcasella@parks.essexcountynj.org with an e-mail address.

Thank you!



Our Environmental Center has become the premiere location for environmental education and nature appreciation. With the help of our partner groups, our dynamic schedule of events and activities will captivate all ages. Walk in our woods, discover habitats, get pointers on gardening, learn about nature photography and much more. It's all about nature and it's all at our Environmental Center.

Joseph N. DiVincenzo, Jr., Essex County Executive

ESSEX COUNTY BOARD OF COUNTY COMMISSIONERS

Wayne L. Richardson, President, Commissioner District 2

Carlos M. Pomares, Vice President, Commissioner District 5



Brendan W. Gill, Commissioner-At-Large

Romaine Graham, Commissioner-At-Large

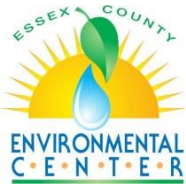
Rufus I. Johnson, Commissioner-At-Large

Patricia Sebold, Commissioner-At-Large

Robert Mercado, Commissioner District 1

Tyshammie L. Cooper, Commissioner District 3

Leonard M. Luciano, Commissioner District 4



COUNTY OF ESSEX

Department of Parks, Recreation, and Cultural Affairs

ESSEX COUNTY ENVIRONMENTAL CENTER

621-B Eagle Rock Avenue, Roseland, NJ 07068

973.228.8776 / www.essexcountyparks.org

Putting Essex County First